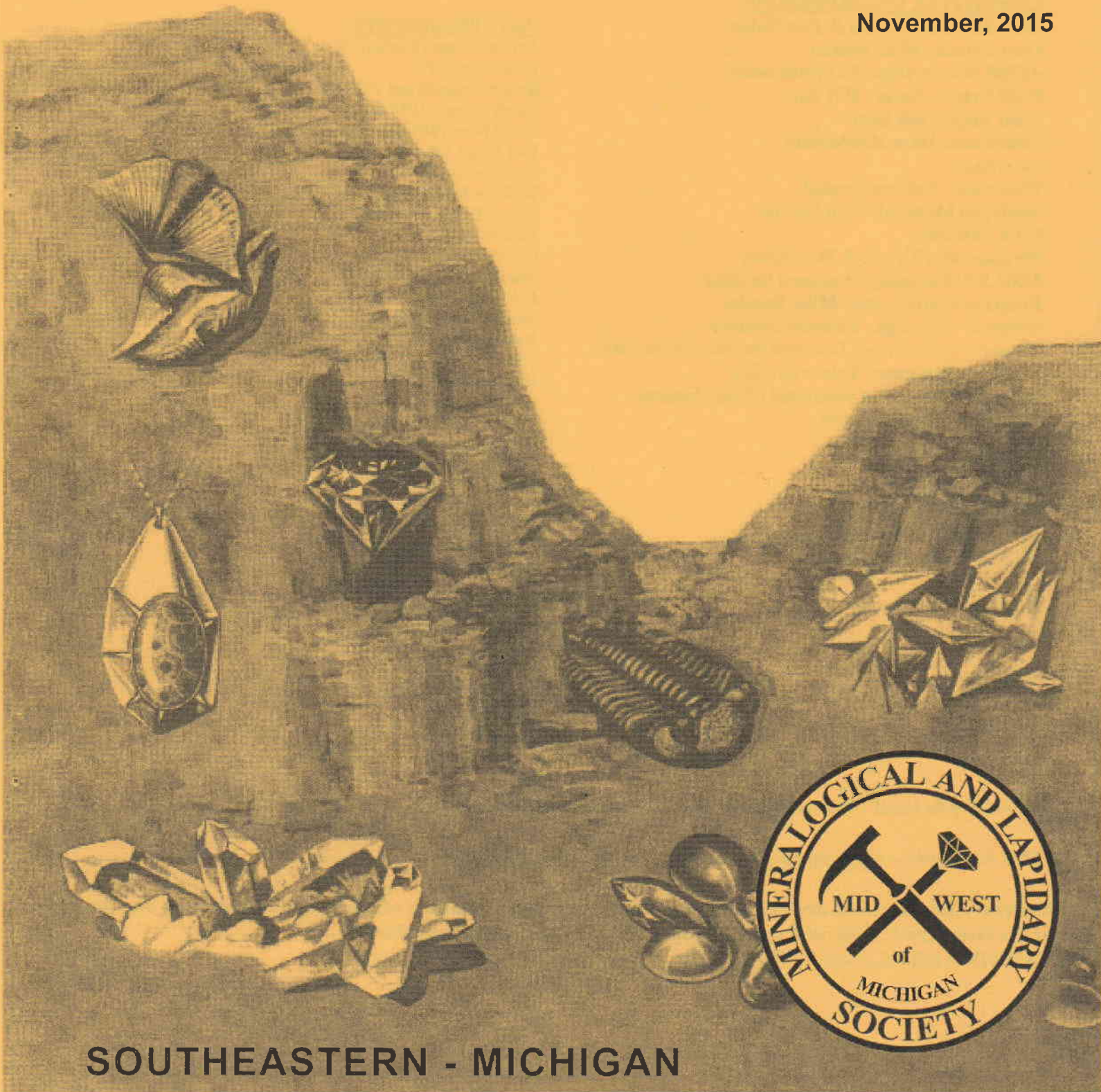


THE ROCKPILE

Official Publication of the Midwest Mineralogical and Lapidary Society

AFFILIATED WITH • MIDWEST FEDERATION OF MINERALOGICAL AND GEOLOGICAL SOCIETIES • AMERICAN FEDERATION OF MINERALOGICAL SOCIETIES

November, 2015



SOUTHEASTERN - MICHIGAN

Midwest Mineralogical & Lapidary Society

2015 OFFICERS

President: Diane Kuzara (734) 675-5237
Vice President: Gary Slominski (734) 379-3294
Recording Secretary: Edie Esche (734) 771-5269
Treasurer: Doris Snyder (313) 291-2133
Corresponding Secretary (Temp) Dan Gumina
(313) 766-8944
Liaison Officer: Leonard Swisher (313) 841-1606

COMMITTEE CHAIRPERSONS

Club Services: Lynda & Don Baker
Door Prizes: Mike Bomba
AFMS Scholarship: Pat Rutkowski
Field Trips – Local: Bill Barr
Field Trips: Bill Barr
Education: Dave Hendershot
Insurance:
Historian: Dolores Swekel
Michigan Material: Tom Morris
Club Publicity:
Membership: Lynda & Don Baker
MMLS Scholarship: Leonard Swisher
Program Coordinator: Mike Bomba
Property – Storage: Leonard Swisher
Property – Meetings: Leonard Swisher / Ken Slack
Sunshine Reporter: Velma Bradley
Refreshments: Janet Slominski / Kim Osborne
Web Site: Stacey Harper

ACTIVITIES

2015 Banquet:
2015 Swap: Lou and Cindy Talley
2015 Auction: Dan Gumina

STUDY GROUPS

Advance Lapidary:
Basic Lapidary:
Bead Study: Diane Kuzara
Faceting:
Mineralogy: Dave Esch
Paleontology:
Wire Study: John Lindsay
Silversmithing: Don Brown

PAST PRESIDENTS

Robert Ellison (interim) 1956
Louis Cox 1957
Robert Heldenbrand 1958-59
Ralph Gamble 1959-60
Fred Miller 1960-61
Bert Smart 1961-62
Leo Nieman 1963
Nicholas Rothenthaler 1964-65
Robert Fedoruk 1966-67
John Good 1968-69
Cecilia Duluk 1970
Stanley Franczak 1971-72
E. Donald Stinnett 1973-74
Ralph Goniea 1975-76
Norman Hanschu 1977-78
Thomas Gibbs 1979-80
Harry Nagy 1981-82
Elsbeth Gibbs 1983-84
Loretta Franczak 1985-86
Roland Snyder 1987-88
Jay Ross 1989-90
Tom Morris Jr. 1991-92
Diane Kuzara 1993-94
Bill Orban 1995-96
Glenn Swain 1997-98
Bill Peach 1999-2000
Diane Kuzara 2001-02
Cecilia Duluk 2003-04
Russ Ranker 2005-06
Dick DePodesta 2007-08
Rich Williams 2009-10
Leonard Swisher 2011-12
Mike Bomba 2013 - 14

The Rockpile Staff : Editor Peter Kuzara, dpkuzara@peoplepc.com, 734-675-5237

MMLS website – www.mmls.us Email - rockhounds@mmls.us

General Club meetings are held at 7:30 p.m. on every third Tuesday of the month (except July and August)
at the Democratic Club of Taylor, 23400 Wick Rd., Taylor, MI 48180

GUESTS ARE ALWAYS WELCOME

Attention Exchange Newsletter Editors

The Rockpile's new address is:

Rockpile Editor

20281 Thomas

Brownstown, Michigan 48183

If you wish to send us your newsletter by U.S. Mail use the above address, we don't have the PO Box.

If you send us a hard copy we will send you a hard copy. If you send us your newsletter by internet we will send you the Rockpile by internet. Our email address is: dpkuzara@peoplepc.com

The President's Corner

Happy Fall to everyone! We have now had our first General Meeting at our new place, the Democratic Club of Taylor and I think we will do just fine there. We were a little worried that since there would be a bingo going on in the big room, there might be a lot of noise in our meeting room, that did not happen. Parking was not a problem either.

Thank you to our members who brought in a lot of goodies to help celebrate our new location. We have reinstated our donation can to help with the cost of coffee supplies, etc. Our Refreshment Chairperson, Janet Slominski will be passing around a clipboard for members to sign up to bring goodies for the following month like we have done in the past. At the December meeting, we all bring a plate of goodies. We are rapidly approaching the holiday season. That means at the November General Meeting we will be taking up our annual collection for the Salvation Army, canned goods or a cash donation. We will take up gloves, hats at the December meeting.

November 7th mark your calendar for our 50th annual auction - hope to see all our members come out for this event!

Diane

Remember

Our Election for club officers will take place at the November General Meeting. BE THERE!!

The November Program:

Will be a video entitled: Adventures in Mexico's Great Specimen Mines by Dr. Peter Megaw.

REMEMBER OUR FOOD COLLECTION FOR THE SALVATION ARMY AT OUR GENERAL MEETING!!!!!!!

The Minutes of the Board Meeting September 11, 2015 briefly summarized

Minutes of the June 12, 2015 meeting approved as printed. Meeting called to order at 7:34PM.

Treasurer's report was approved as read. Leonard Swisher enquired about the Scholarship Fund and suggested the Scholarship Bylaws as currently written be updated to reflect the new Geological industry's technological updates. Diane Kuzara advised that the Board Members were willing to help pick the 2016 recipient and help update the bylaws. Dan Gumina advised a flyer for the November Auction would be available as soon as possible for distribution at the September General Meeting. Doris Snyder's committee report included two new members (Jake Hutchison and Howard Venier) who the board voted and accepted the motion for membership to be presented and voted during the September General Meeting. Diane Kuzara received a ballot for the 2015 -16 election of officers for the Midwest Federation where board members approved and voted on selected electoral candidates. Diane Kuzara and Don Baker worked on the Tri-fold brochure. Diane also presented cost from three printers. Board members decided to approve the purchase of 500 brochures with corrections through Don's printing source.

Tom Morris made a motion to replace Recording Secretary Edie Esche with Julie Knechtges. Edie had to step down for health reasons.
Submitted by Julie Knechtges. Acting Secretary

The Minutes of the General Meeting of September 15, 2015 briefly summarized:

Minutes of the June 16, 2015 were approved. The Treasurer's report for June 1 -August 31, 2015 was approved. Approval was granted to purchase 500 new club brochures as updated. Two new membership requests were approved by the board and general meeting members for Jake Hutchison and Howard Venier. A refreshment signup sheet and donation box was added to the table for financial support. The 50th Auction is being held November 7, 2015, flyers will be available for distribution. A volunteer request was made to replace the resigned Historian. Help is needed hosting board meetings at member's homes. The 2016 slate of officer for the November election was announced. The 2014 Financial Statement is complete and available for viewing.
Summarized by Julie Knechtges, Recording Secretary

Welcome New Member

Dwayne Ferguson
15163 O'Connor
Allen Park, MI 48101
Tel. 313-550-9809
Email: Shelby0671111@yahoo.com

Ana Ferguson
15163 O'Conner
Allen Park, MI 48101
Tel. 313-414-3463
Email: anamcervera@yahoo.com

A Rockhound is the only person who is happy when down in the dumps. From the Conglomerate 10/15

Dates to Remember

Contacts for study groups

Bead study, Diane Kuzara, 734-675-5237

Mineral study, David Esch, 734-665-5574

Wirewrap, John Lindsay, 734-604-8561

**Lapidary work shop, Frank Konieczki
734-323-2218**

Sliversmithing study group meeting is cancelled until further notice

**November 2 Lapidary work shop 2009 W. Michigan Ave., Ypsilanti, Mi., 7pm to 10pm.
Fee is \$2.50 for each evening.**

**November 4 Wire Wrap Class, Call John Lindsay
For details.**

**November 5 Bead study group will meet at the Kuzara's, 20281 Thomas, Brownstown, Mi.
at 7pm**

**November 7 MMLS Auction
SEE FLYER IN THIS NEWSLETTER**

**November 13 Board Meeting and Rockpile
Deadline at Mike Bomba 1419 Gregory, Lincoln Park, MI at 7:30pm.**

November 17 General meeting will be held at the DEMOCRATIC CLUB OF TAYLOR, 23400 WICK RD., TAYLOR at 7:30pm.

**November 19 Bead study group will meet at the Kuzara's, 20281 Thomas, Brownstown at 7pm
Mi. at 7:30pm.**

November 19 Mineral Study Group will meet at Dave Esch's house, 227 Barton Shore Dr., Ann Arbor,

**December 3 Bead study group will meet at the Kuzara's, 20281 Thomas, Brownstown at 7pm
Mi. at 7:30pm.**

December 7 Lapidary work shop 2009 W. Michigan Ave., Ypsilanti, Mi., 7pm to 10pm. Fee is \$2.50 for each evening.

December 9 Wire Wrap Class, Call John Lindsay for details

December 11 Board Meeting and Rockpile Deadline.

December 15 General meeting will be held at the DEMOCRATIC CLUB OF TAYLOR, 23400 WICK RD., TAYLOR at 7:30pm.

December 17 Bead study group will meet at the Kuzara's, 20281 Thomas, Brownstown at 7pm.

December 17 Mineral Study Group will meet at Dave Esch's house, 227 Barton Shore Dr., Ann Arbor,

Our Sister Club Events

Shows and Auctions:

November 9th Michigan Mineralogical Society (Auction), Cranbrook Institute of Science, 39221 Woodward, Bloomfield, MI for more information www.michmin.org

From the Editor: My two cents.

This month I will keep it short. First a Paraprosdokian is an amusing figure of speech explained as follow: there are figures of speech in which the latter part of a sentence or phrase is surprising or unexpected; frequently humorous. This was passed along by a club member Velma Bradley.

Pete

The PARAPROSDOKIANS for this month are:

3. Since light travels faster than sound, some people appear bright until you hear them speak.
4. If I agreed with you, we'd both be wrong.

What is Refractive Index?

From The Midwest Faceter, August 2015 via Livingstones 9/15

Refractive index, or RI as it is often abbreviated, is one of the most important signatures of a gemstone. Measuring the refractive index is one of the first steps in identifying a gemstone, though some gemstones have similar refractive indices and additional tests are required for a definitive identification.

RI is the difference between the speed of light in a vacuum and the speed of light in the gemstone. As light passes through a gemstone, it slows down because a gemstone is more dense than air. This slowing down causes the path of light to change. Refraction is the bending of light as it passes in or out of a gemstone. The angle of refraction in the gemstone determines its RI. Gemstones with a higher RI are more brilliant than those with a low RI. Diamond has an RI of 2.42; quartz has an RI of 1.541.55.

The RI of most gemstones is easily measured using a simple optical instrument known as a refractometer.

Some gemstones are singly refractive; they have only one refractive index. Other gemstones, in fact, most are double refractive; They have two different refractive indices. When a beam of light enters a doubly refractive gem, it is split into two beams, each traveling at different speed and on a different path through the crystal. Birefringence is a measurement of the difference between the two refractive indices in gems that are doubly refractive, and it ranges from a low of .003 to a high of .287. Very few gemstones are singly refractive; in fact, the only well known gems with that property are diamond, spinel and garnet.

Neodymium Glass

Add neodymium oxide (Nd2O3) to molten glass and the result is a beautiful lavender glass. Neodymium-doped glass finds use in high-power
Con't on page 5.

**MIDWEST MINERALOGICAL & LAPIDARY SOCIETY
PRESENTS**

THE 50TH ANNUAL AUCTION

SATURDAY, NOVEMBER 7, 2015 AT 7:00 PM

AT THE

DEMOCRATIC CLUB OF TAYLOR, 23400 WICK RD. TAYLOR, MI.

AUCTION STARTS AT 7:00PM, SALES TABLES ARE OPEN AT 6:00PM

**FREE ADMISSION AND PLENTY OF FREE PARKING
PUBLIC INVITED**

PLENTY OF TREASURES TO BE FOUND:

MINERALS---LAPIDARY---JEWELRY---FOSSILS---BOOKS---AND MUCH MORE

FOR MORE INFORMATION CALL DAN GUMINA 313-766-8944

The Ten Rock Commandments:

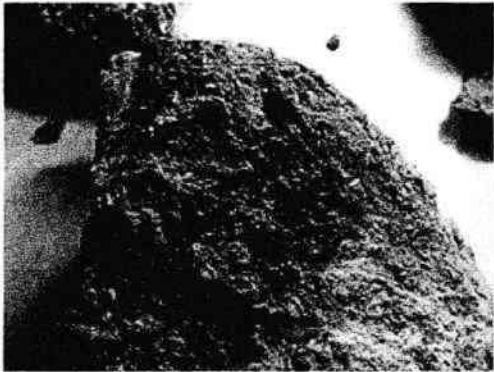
1. Thou shalt not touch thy neighbors' minerals unless he/she places them in your hand.
 2. Thou shalt not test the strength of crystals by pushing, biting or squeezing.
 3. Thou shalt not drop thy neighbors fossil for many do not bounce properly.
 4. Thou shalt not place thy neighbors' specimen in thine own pocket.
 5. Thou shalt not test thy neighbors' agates for hardness by rubbing them together.
 6. Thou shalt not argue the name of a mineral too violently; sometimes thou could be wrong.
 7. Thou shalt not climb above thy neighbor when on a field trip unless thou are willing to spend the remainder of the day digging him/her out.
 8. Thou shalt protect thine own eyes, hands, & feet so thou can enjoy many more field trips.
 9. Thou shalt not encroach on thy neighbors' diggings lest his/her hammer be dropped on your toe.
 10. Thou shalt not complain about or denounce thy club officers under penalty of being elected one thyself.
- Via Scribe 11/92 & Rock Rollers Club 91/10, Osage Rock & Mineral Club From January 2015 Ozark Earth Science Gem. Mineral. & Fossil Club News, The Quarry 2/15



solid state lasers used for nuclear fusion, producing a 351 nm laser beam. But this beautiful glass has an additional feature: under sunlight or incandescent lights it is lavender, but under fluorescent light, the glass appears light blue. And under trichromatic (three wavelength) light, the glass looks greenish. This is a synthetic version of the "alexandrite effect" observed in the alexandrite variety of chrysoberyl. Source: Source: Rocky Trail, 1/15 via The Conglomerate 4/15

FOSSIL HASH

From Wikipedia, the free encyclopedia



A fossil hash

Hash fossils are not actually one fossil, they are many fossils in the same rock. The term hash fossil describes the fossil formed when all the organic material in an environment falls to the ocean floor and fossilizes, hence the name "hash". When you look at a hash fossil, you actually are looking at a piece of ancient seabed. In hash fossils you can usually find the pieces of corals, crinoids, bryzoans, and brachiopods. Also you can rarely find a piece of a trilobite. Hash fossils are very common, and are most easily found in limestone.

References

- [New York state museum](#)
- A Complete Guide to Michigan Fossil Hunting: Joseph Kchodl
- Fossil Hunting in the Great Lakes State: Jack Stack
- [A guide to Michigan Fossil Hunting by Michael Stack](#)
- [Geology stubs](#)

NOTICE DUES ARE DUE

Dear MMLS member:

It 's that time again when you are asked to renew your membership for the year (2016) in the Midwest Mineralogical and Lapidary Society. (Membership runs from January through December each year.)

May we ask your cooperation by renewing now. Doing so will ease our Treasurer's job, save the cost of an extra mailing and assure your receipt of The Rockpile without interruption.

Just use the handy Membership Renewal Form. Complete the form, enclose your check made payable to MMLS and mail to our treasure:

Doris Snyder
9728 Pardee
Taylor, Mi. 48180

It's that easy! If you would like your membership card mailed to you, please include a SASE.

Midwest Mineralogical Lapidary Society

Adult Dues: \$15.00

Juniors (under age 18) \$1.00

Yes I wish to renew my/our membership in MMLS for 2016 and continue to receive The Rockpile

Name(s) _____

Address _____

City _____

State _____ Zip _____

Phone (____) _____

Email address _____

Enclosed is my check payable to MMLS for \$ _____

Dues paid after December 31st is subject to a \$3.00 Reinstatement fee. Add to your check.

Would you like your Rockpile sent to you by Email?
Yes _____ No _____

DO IT TODAY BEFORE YOU FORGET!!!!

This side intentionally left blank.

This side intentionally left blank.

This side intentionally left blank.

This side intentionally left blank.

DESERT VENTIFACTS -

By Cecil Goss [Palomar Gem & Min. Soc.] ("la DELVINGS 11/01)

Do you know what a ventifact is? Rocks, which have been etched, polished or sculpted by sand-carrying winds, are called ventifacts. The surface patterns of any particular rock depend upon many factors, including its mineral composition, orientation in relation to the prevailing wind direction and slope.

Wind is one of the most important agents of erosion in deserts. The arid environment and sparse vegetation leave the land exposed and vulnerable to the effects of winds and wind-carried debris. In the Coachella Valley for example, strong winds can last for days and have been known to reach speeds in excess of 100mph in San Geronimo Pass.

Even moderate air movements may pick up objects from the dry surface such as sand particles and turn them into projectiles colliding with anything in their path. The sand-charged winds are exceedingly abrasive, etching car windshields, wooden power poles or solid rock.

Via The Gemrock 2/02

EXTREMOPHILES PRODUCE SOLID GOLD

Simple microscopic organisms which thrive in extreme conditions turn dissolved gold into solid gold. While experimenting on the use of a similar microbe to clean up toxic water, University of Massachusetts professor Derek Lovely discovered the microbe's special power.

The extremophiles inhale dissolved gold and convert it into solid deposits. "They use dissolved metals like iron, uranium and gold the same way we use oxygen," said Lovely,

(condensed from article in San Jose Mercury News 9/4/01 by Breccia, from Breccia 9/01)

Via The Pegmatite 10/01

THE MIDWEST MINERALOGICAL AND LAPIDARY SOCIETY (MMLS) is an educational non-profit organization founded in 1956. The Society now has more than 200 members and is affiliated with the Midwest Federation of Mineralogical Societies and the American Federation of Mineralogical Societies. Significantly, MMLS has been recognized numerous times by the Midwest and American Federations with first place (gold level) awards in the annual All American Club Awards Program.

PURPOSE: The purpose of The MMLS shall be (1) to promote interest in and increase knowledge in the fields of mineralogy, geology, and paleontology, including lapidary and related arts; (2) to publish articles and information pertaining to these fields; (3) to encourage collections and to display specimens in these fields; and (4) to arrange field trips in support of the interests and activities specified.

GENERAL MEETINGS: the third Tuesday of each month, September through June, 7:30 p.m. at the Southgate Arena, 14700 Reaume Parkway, Southgate Michigan **GUESTS ARE ALWAYS WELCOME.**

MEMBERSHIP: Applications for membership can be obtained at any general meeting or from any MMLS member. **DUES:** Entrance fee - \$3.00; annual dues - \$15.00 (adult), \$1.00 (junior) on a year basis. Membership expires each Dec. 31.

ANNUAL EVENTS:

March – Rock Swap and Sale
November – Auction

STUDY GROUPS: Special-interest study groups meet monthly, September though June. No additional fees are involved. Currently the following groups are active:

Advanced Lapidary	Faceting	Paleontology
Basic Lapidary	Wire Study	Bead Study
	Mineralogy	Silversmithing

FIELD TRIPS: Several one day field trips and one longer (one to two weeks) field trips are conducted each year. Mostly, these field trips focus on the collection of mineral and fossil specimens at quarries, mines, and other known collecting sites in the United States and Canada. Field trips are restricted to MMLS members.

SCHOLARSHIP FUND: MMLS has established a scholarship Endowment Fund which provides scholarships to qualified students enrolled in an accredited college or university in southeastern Michigan who have completed at least their junior year and have a major in geology, mineralogy, paleontology or lapidary and related arts.

SEAMAN MINERAL MUSEUM: MMLS has designated the A.E. SEAMAN Mineral Museum at Michigan Technological University, Houghton, Michigan, as it's "adoptive" museum, pledging to support it with gifts to the museum's endowment fund and the donation of mineral specimens and services.

INTERNET WEB SITES OF INTEREST:

Midwest Federation: www.amfed.org/mwfi/index.html

American Federation: www.amfed.org

Midwest
Mineralogical and
Lapidary
Society of
Michigan

EDITOR
20281 THOMAS
BROWNSTOWN, MI
48183



Address Service Requested

The ROCKPILE

Bulletin Editor Contest Awards



■
1993 – 1st Place (Large Bulletin) AFMS
1991 – 1st Place (Large Bulletin) MWF
1990 – 1st Place (New Editor) AFMS
1990 – 1st Place (New Editor) MWF

STAMP

Dated Material

Midwest
Mineralogical and
Lapidary
Society of
Michigan
EDITOR
20281 THOMAS
BROWNSTOWN, MI
48183